



# Mech-Eye LSR XL-GL Industrial 3D Camera



- Ultra-high resolution
- Exceptional anti-reflection capability
- Extensive scanning range
- Robust resistance to ambient light

## Greater point cloud precision

Robust optical algorithms reduce fluctuating point clouds along the Z-axis to enhance data accuracy when the camera scans objects at a long distance.

## Ultra-high resolution with 5 million pixels

Create high-resolution point clouds, clearly presenting fine features such as surface deformations, pits, and protrusions.

## Exceptional resistance to reflection and ambient light

Self-developed laser structured light technology and multiple scan modes enable clear imaging even in the presence of strong ambient light and intense reflection.

## Super-large scanning range

A large field of view and deep depth of field make it possible to cover a wider scanning range and handle deep bins and oversized pallets in applications at long working distances.

## Specifications

Working distance: 1600–3500 mm

Near FOV: 1280 × 1280 mm @ 1.6 m

Far FOV: 3000 × 2800 mm @ 3.5 m

Depth map resolution: 2448 × 2040

RGB resolution: 4000 × 3000/2000 × 1500

Point Z-value repeatability ( $\sigma$ )<sup>[1]</sup>: 0.2 mm @ 3.0 m

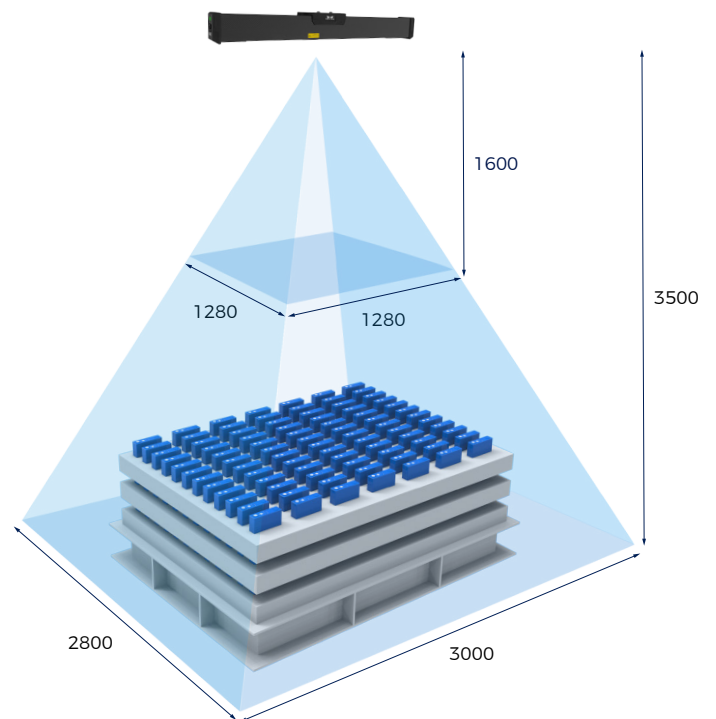
Measurement accuracy (VDI/VDE)<sup>[2]</sup>: 1.0 mm @ 3.0 m

Typical capture time: 0.6–1.1 s

Dimensions: 942 × 88 × 116 mm

Baseline: 800 mm

## Field of View (mm)



Weight: 4.5 kg

Operating temperature: -10–45°C

Communication interface: Gigabit Ethernet

Light source: Red Laser (638 nm, Class 2)

Input: 24 V DC, 3.75 A

Safety and EMC: CE/FCC/VCCI/KC/ISED/NRTL

IP rating: IP65

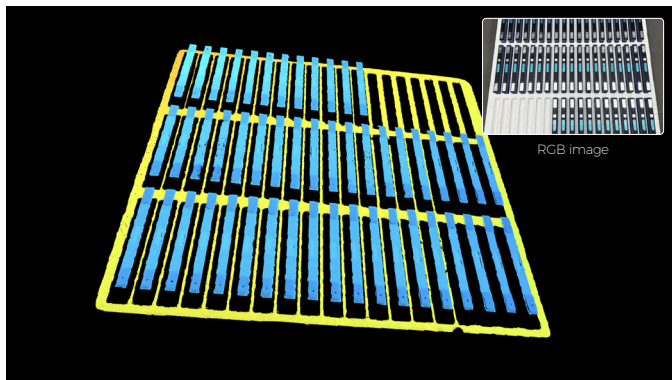
Cooling: Passive

Mean Time Between Failures (MTBF): ≥ 100,000 hours

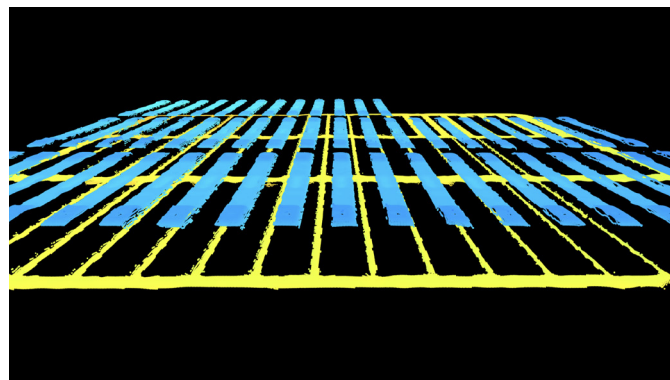
[1] One standard deviation of 100 Z-value measurements of the same point. Measurement target was a ceramic plate.

[2] According to VDI/VDE 2634 Part II.

## Complete and Detailed Point Clouds



Thanks to its ultra-wide FOV and depth of field, the camera can capture complete 3D point clouds of battery cells on the entire layer (1200 × 1200 mm).



Thanks to the high resolution, the camera is capable of capturing detailed, accurate 3D data of battery cells even at a distance of 3 meters.

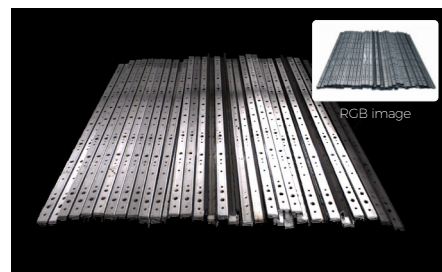
▲ Mech-Eye LSR XL-GL @ 3 m, color rendered by height



Highly reflective brake discs



Complex-structured engine blocks

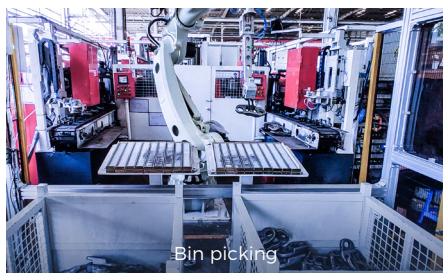


Reflective sheet metal parts

▲ Mech-Eye LSR XL-GL @ 3 m

## For High-Precision Applications at Long Working Distances

Suitable for bin picking, machine tending, and steel plate sorting in automotive, metal & machining, logistics, EV battery, home appliances, and more industries.



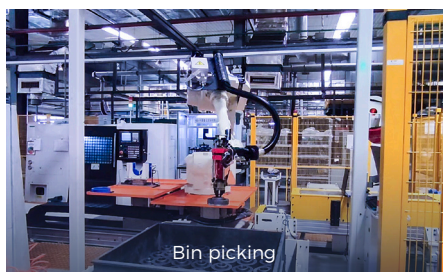
Bin picking



Large object depalletizing



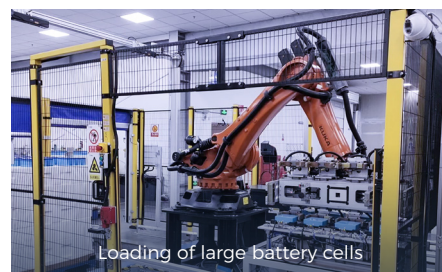
Unloading of stamping parts



Bin picking



Unloading and sorting of steel plates



Loading of large battery cells



Mech-Mind Robotics  
 Website: [www.mech-mind.com](http://www.mech-mind.com)  
 E-mail (business): [info@mech-mind.net](mailto:info@mech-mind.net)  
 E-mail (PR & marketing): [marketing@mech-mind.net](mailto:marketing@mech-mind.net)